

Spec'ing the right Collection Body



WITTKE

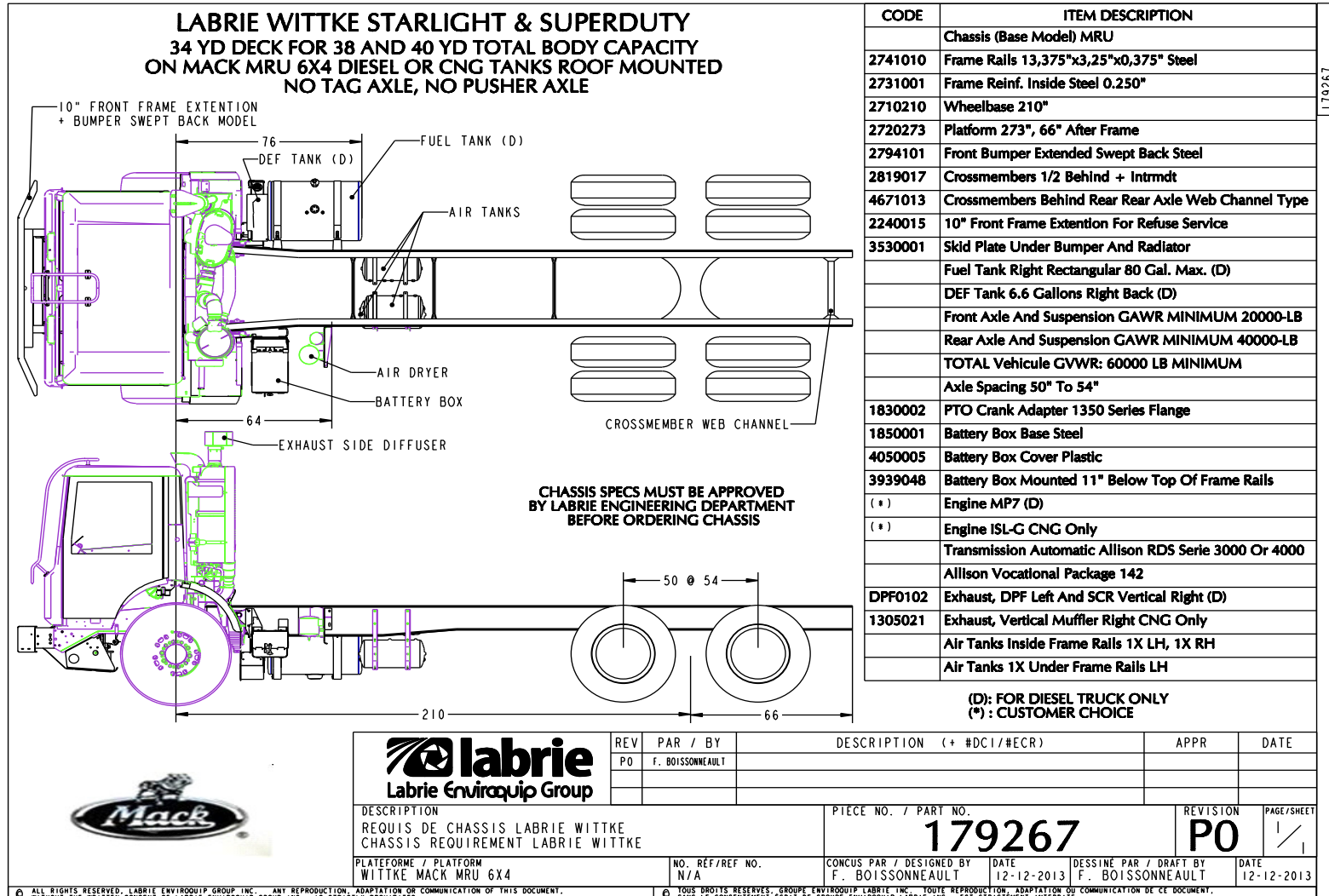
- *I felt exactly how you would feel if you were getting ready to launch and knew you were sitting on top of 2 million parts — all built by the lowest bidder on a government contract.’ – John Glenn*



Body and Chassis Integration

- Exchange of information between body and chassis OEMs is key
- No more blame game after truck is built
- Better Weight Distribution
 - Ride Quality
 - Tire Wear
 - Chassis Components

Chassis Layout Drawings



Weight Distribution

WEIGHT DISTRIBUTION # DRAFT (REFERENCE TO DRAWING # N/A)
AUTOMIZER 31 YARD³ ON CHASSIS PETERBILT 520 6X4 DIESEL WITH TAG AXLE

		RA	FA	WEIGHT	DISTANCE
CHASSIS BODY ACCESS.	CHASSIS (CUSTOMER)	6 500	10 650	17 150	
	DRIVER	-19	219	200	-60,000
	HYDRAULIC TANK	385	446	831	47,875
	FUEL (50 US GAL.)	228	132	360	80,863
	BODY	7 845	3 173	11 018	96,125
	TAILGATE	1 422	-556	866	276,500
	RIGHT-HAND HD	1 042	1 158	2 200	49,875
	CRUSHER PANEL	248	133	381	84,500
	HOPPER WEAR PLATES	115	127	242	50,000
	TAG AXLE	2 111	-611	1500	231,000
	TOTAL BODY	19 877	14 871	34 748	

WHEELBASE	AB	TAG AXLE
194	42,0	79

DRAFT

		RA	FA	WEIGHT	DISTANCE
PAYLOAD	BODY (REFUSE)	21 609	-1 792	19 816	169,546
	TAILGATE (REFUSE)	4 856	-1 920	2 936	278,875
	TOTAL PAYLOAD	26 464	-3 712	22 752	

DENSITY	VOLUME	% FILL
734	27,0	100
734	4,0	100
	31,0	

		TAG	RA	FA	
	TOTAL WEIGHT		46 341	11 159	57 500
TAG AXLE EFFECTS	MIN	9 432	33 068	15 000	57 500
	MAX	13 200	27 766	16 534	57 500
MRWL:	BRIDGE FORMULA	20 000	34 000	20 000	57 500
	WEIGHT REGULATION	20 000	34 000	20 000	80 000
	AXLES CAPACITY	13 200	40 000	20 000	73 200

Comments :
MEETS AXLES CAPACITY, BRIDGE FORMULA AND ARIZONA' WEIGHT REGULATION WITH TAG AXLE ACTIVATED BETWEEN 9 432 AND 13 200 LBS. THIS SETUP IS FOR "WATSON & CHALIN" TAG AXLE MOUNTED ON 275/80R22.5 TIRES SIZE. ACTUAL CHASSIS WEIGHT MUST BE AS USED FOR CALCULATION. LOAD DENSITY IS AS USUAL. WEIGHT DISTRIBUTION SUBJECT TO CHANGE. WEIGHT SHOWN HERE IS AN ENGINEERING ESTIMATE AND DOES NOT INCLUDE UNPUBLISHED OPTIONS. ACTUAL "SHIPPING" WEIGHT MAY VARY.

Date: 20-7-2018
Calculated by : Tommy Chiasson
Approved by : _____

LEGEND		DISTANCE	
RA	Rear Axle		Distance between front body and center of gravity
FA	Front Axle		
WEIGHT	Pounds <input type="checkbox"/> Kg <input type="checkbox"/>	MRWL	Most restrictive weight limitation
DISTANCE	Inches <input type="checkbox"/> Cm <input type="checkbox"/>		
VOLUME	Cubic yard <input type="checkbox"/> M ³ <input type="checkbox"/>		
DENSITY	Lbs/cu.yd <input type="checkbox"/> Kg/M ³ <input type="checkbox"/>		
AB	Distance between FA and front body		

Body Sizes and Types

REL : 8 – 32yd

FEL: 30 – 44yd

ASL: 10 – 36yd



Commercial Side Loaders



Specialty Trucks



Specialty Trucks



- Right tool for the job
- Landfill distance
- Multi Purpose
- Number of Residents/Stops
- Material
 - Recycling
 - Bulk
 - Engine Parts

- “The bitterness of poor quality remains long after the sweetness of low price is forgotten” – Benjamin Franklin



- Heavy Duty Components
- Grease Blocks
- Electrical
 - Multiplex vs Relay Logic
- Hydraulic Pumps
 - PTOs
 - Pistons or Vanes

- More Steel..Longer it lasts
- Quality Steel..High PSI yield strength
- Big Steel Box....Material Matters

- Zinc Coated Lines
- Undercoatings
- Hydraulic Heaters/Coolers/Oils
- Lighting/Cameras
- CNG Tanks/Scales
- Labrie has over 7,000 NSOs
 - Custom Truck Manufacturers

- Get what you want
- Life cycle is 7-15 years
 - No need to cut corners
 - You'll be around long after council member