

The Recycling Partnership

# Grant Funding Opportunities

Wyoming Solid Waste and Recycling Association 2022 Conference

August 2022

Powell, WY



Vincent Leray, Grant Development Manager

# Agenda

---

 *Intro to The Recycling Partnership*

 *Processors*

 *Curbside*

 *State and Regional*

 *Drop-off*

 *Discussion*

# THE CORE VALUES

WE LIVE BY

**PARTNERSHIP IS  
PART OF OUR  
NAME FOR A  
REASON**

Embrace **Change**  
&  
Drive **Action**

Have  
**FUN!**

Act with  
**INTENTION**  
&  
**INTEGRITY**

Be your  
whole  
**self**

**Play** well with others

**PURSUE GROWTH AND LEARNING**

stand **UP** & speak **OUT**  
FOR  
**EQUITY** &  
**INCLUSION**

Take **time** to  
reflect and dream



**Vincent Leray**  
*he/him*

Grant Development Manager  
vleray@recyclingpartnership.org  
662.640.8571



# Healthy Recycling Needs a Systems Approach



A young girl wearing a yellow hijab, a grey cardigan, teal leggings, and white boots with black laces is pushing a large blue recycling bin. The bin has a white recycling symbol on its side. She is in a brightly lit room with large windows in the background. A semi-transparent teal box is overlaid on the left side of the image, containing white text.

**We've reached 60% of  
the U.S. population.**

Our proven recycling system solutions  
increases access and improves  
quality.



# Circular System Benefits since 2014

Diverted over  
**770 million**  
incremental pounds of  
recyclables from landfills



Placed  
**1.3 million**  
carts in communities



Inspected  
**1.6 million**  
recycling carts

Reached over  
**100 million**  
households



Supported over  
**one-third**  
of community  
recycling programs



Avoided  
**670,000**  
metric tons of CO<sub>2</sub>e

Reduced  
contamination by  
**20%**  
through our Feet on  
the Street projects

The Recycling Partnership

# Curbside Carts – our standard grant





# Recycling Partnership Residential Curbside Cart Grants

- Grants for cart-based curbside recycling systems
- Funding up to \$15/cart, depending on service type
- Technical assistance and design of education/ outreach materials
- RFP available on an on-going basis
- Designed to align with State grants



<https://recyclingpartnership.org/recycling-cart-grant/>





# Recycling Partnership Residential Curbside Cart Grants

- Application only takes a few hours
- Can often award in just a few weeks
- Happy to fund projects 18 months out
- Can put money on the table before final OK from local gov.
- Last a year after project implementation for data collection



<https://recyclingpartnership.org/recycling-cart-grant/>



# Why Invest in Cart Based Recycling

---

- Cart based collection is most efficient way to increase and sustain high recycling rates
- Carts are the best way to respond to public demand for recycling service
- Citizens see recycling as a clear sign of their community's commitment to protecting the environment
- Effective recycling is critical to meeting sustainability goals

# More Advantages of Carts

## **COST SAVINGS.**

Budgets benefit from decreased disposal costs, smaller collection crews, more efficiency on the route, and decreased workers' compensation.



Decreased disposal costs



Smaller collection staff



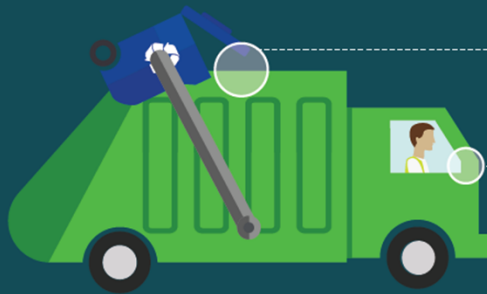
Automation & compaction mean more efficient routes



Flexibility to collect bi-weekly



Decreased Workers' Compensation claims



Manual lifting/  
twisting minimized

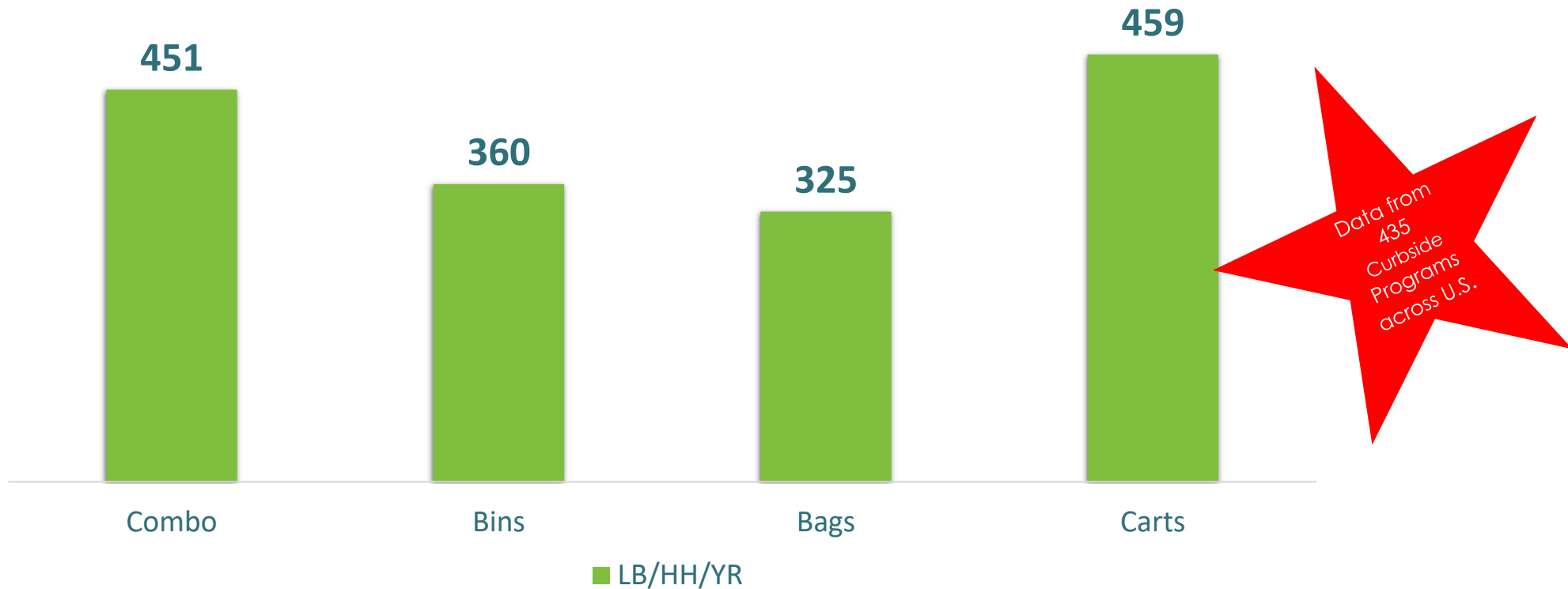
Driver stays safe  
from traffic in cab

Increased safety

Safety = Savings

# 2020 State of Curbside Report: Container Type

Average Surveyed City Curbside Recycling Performance Data



# Selling your curbside project to the Partnership

---

- Tonnage
- Access
- Small Town / Rural
- Regional Development / Cooperation
- Wyoming / West

The Recycling Partnership

# Drop Off – active development





## Drop-off Recycling – teaser for tomorrow morning

---

- Staffed Sites
- Clear Signage
- Comingled collection
- Compaction
- Optimized movement
- Proximity to transfer station / MRF

# What might we fund related to drop-off

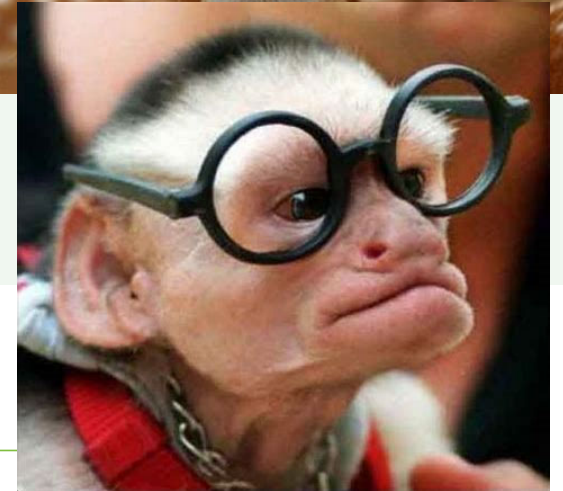
- Site Development
  - Construction and planning
  - Concrete Pads
  - Grading work / electrical
- Infrastructure
  - Compactors preferred
  - Roll-offs
  - Bunkers
- Hub and Spoke
  - Soft shell Transfer Station
  - Hard shell Transfer Station
  - Transfer Station retrofit
- Education
  - Signage
  - Mailers to promote recycling

# Selling your drop-off project to the Partnership

---

- Same as curbside PLUS
- Pilot opportunities to spec future grants
- Data – before and after
- Capable partner

Lots more to think about – let's take a breather



The Recycling Partnership

Processors – Coalition led but growing



# Beyond Residential Grants

---

- Imagine a perfect residential recycling system
  - **Universal and equitable access**
  - **Efficient and safe collections**
  - **Right mix with no contamination**



# Beyond Residential Grants

- Imagine a perfect residential recycling system
  - **Universal and equitable access**
  - **Efficient and safe collections**
  - **Right mix with no contamination**
- Material is still getting lost at the MRF

# Polypropylene Recycling Grants

- MRF grants to support investments in equipment that enables MRF acceptance and recycling of polypropylene
  - Optical or robotic sortation equipment
  - Conveyors, bunkers or other storage for materials
  - Dock space or PP related facility investments
- Maximum Grant = \$500,000, with additional funding available for outreach
- PP recycling grant proposals due quarterly
- Learn more at <https://recyclingpartnership.org/polypropylene-coalition/>

# PET Recycling Grants

- Grants are available to upgrade MRFs and PET reclaimers to:
  - Capture more PET bottles
  - Increase sortation capabilities for PET non-bottle rigids
  - Strengthen recycling opportunities for pigmented and/or opaque PET
- Maximum Grant = \$500,000, with additional funding available for outreach
- PET recycling grant proposals due quarterly
- Learn more at [recyclingpartnership.org/pet-recycling-coalition/](https://recyclingpartnership.org/pet-recycling-coalition/)

# Can Capture Grants for MRFs

- MRF grants to support investments in equipment that increase the capture of aluminum cans
  - Eddy current, optical or robotic sortation equipment
  - Conveyors, bunkers or other storage for materials
- Maximum Grant = \$75,000
- Two rounds of applications, first cycle focused on southeast, second cycle nation-wide (6 grants total)
- Working to build funding to support more grant cycles so reach out if you know of opportunities!

# Just making sure you're paying attention



The Recycling Partnership

State and Regional – massive leverage





# MICHIGAN – The Partnership as Contractor

## Phase I – SF & DO Quality Improvement

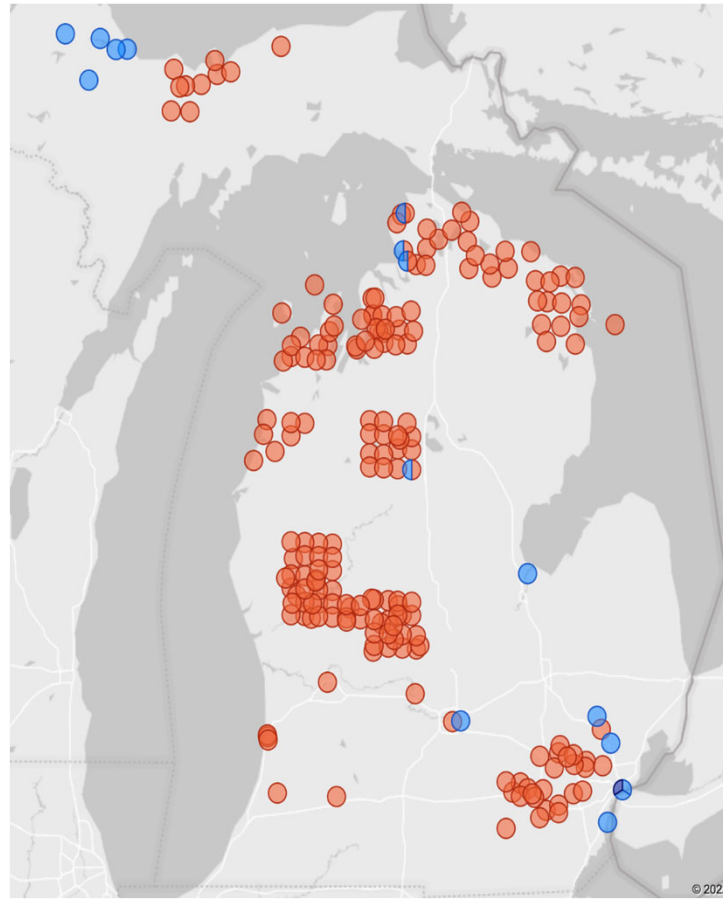
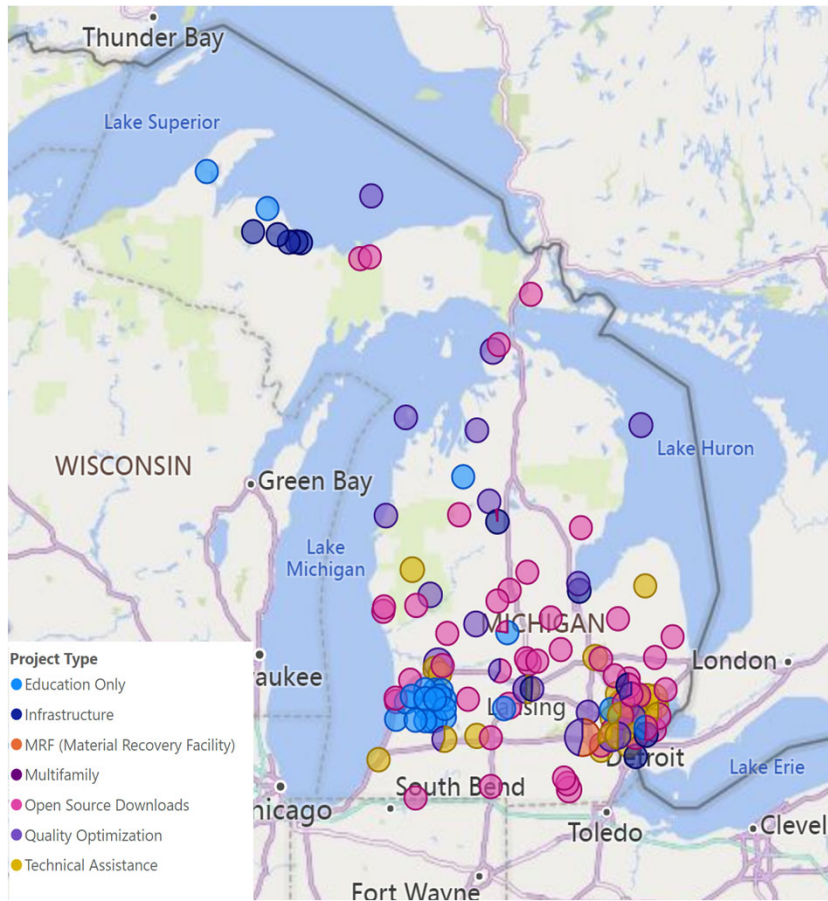
- \$2.1M contract 2020, extended 2021
- 14 grantees (representing over 100 communities)
- DO Social Media Toolkit
- DO Toolkit

## Phase II – SF, MF & DO Quality Improvement

- \$1.3M contract for 2022
- 14 grantees (representing 98 communities)
- App to Action grants
- AI technology pilots (curbside, DO)
- Small Community Education Grant

## Phase III – Scoping for 2023

# Impact in Michigan



Leveraged > \$14M to date

Reaching 264 programs

>30K new tons unlocked annually

Prototyping new messaging tactics for scale

Curbside Infrastructure  
Quality Improvement  
MRF Infrastructure

# OHIO – The Partnership as Grantee

## Phase 1

- 2018 Special Assistance Grant
- 2-year project (ending Oct. 2020 extended Oct. 2021)
- \$320,000 and \$80,000 matching funds
- 4 MRF-sheds, 2-4 communities (representing 155,000 HHs)
- Video & Customized toolkit

## Goals

- Reduce contamination by 25-35%
  - Communities are experiencing increase costs
  - Communities are rethinking material mix and service levels
  - More material going to landfill
  - Contamination increases hazards to workers and MRF's (batteries and needles)
- Engage and involve stakeholders
- Build roadmap for future granting initiatives

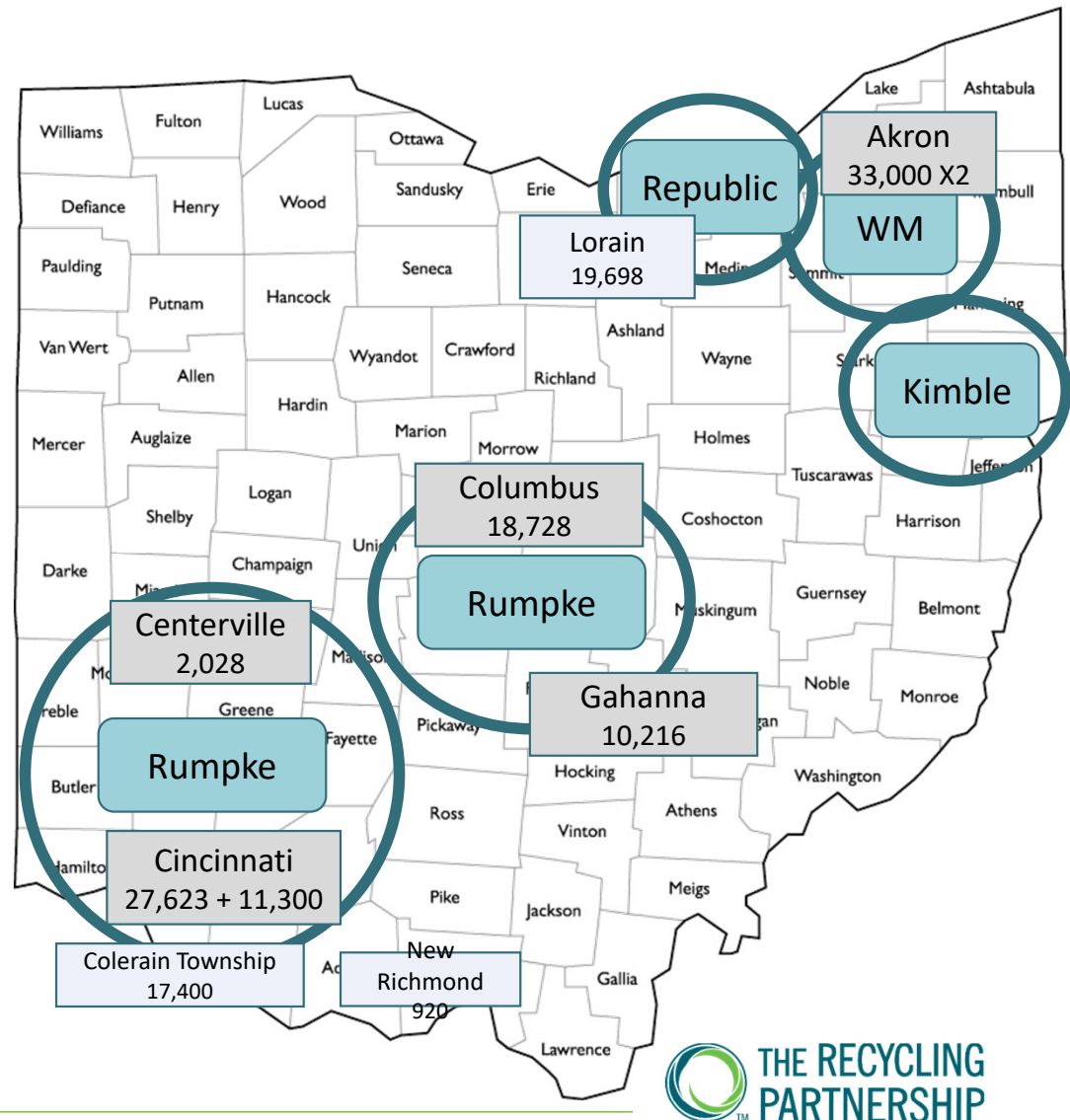
# Program Map

## MRF:

- Target-4 MRF-sheds
- Hit-3 MRF-sheds

## Communities

- Target-4 communities totaling 155,000 hh
- Hit-6 communities totaling 147,489



# Program Map

## MRF:

- Target-4 MRF-sheds
- Hit-3 MRF-sheds

## Communities

- Target-4 communities totaling 155,000 hh
- Hit-6 communities totaling 147,489

Community	HHs	Contamination		
		Before	After	Reduction
<b>Phase 1</b>				
Centerville	2,028	19%	11%	<b>-42%</b>
Fairfield	11,594	22%	12%	<b>-45%</b>
Columbus (varying sort methodologies)	18,728	21%	19%	<b>-10%</b>
Cincinnati	27,623	28%	20%	<b>-29%</b>
Akron	33,000	39%	28%	<b>-28%</b>
Subtotal	92,973			
<b>Phase 2</b>				
Akron	33,000	22%	15%*	<b>-32% (estimate)</b>
Cincinnati	11,300	26%	21%	<b>-19%</b>
Gahanna	10,216	22%	TBD	<b>TBD</b>
Subtotal	54,516			

# NORTH CAROLINA – The Partnership as Grantor

NC DEQ has own granting initiative,  
infrastructure, staff

- Additional grant funds allow them to expand grant offerings
- Limited TRP technical assistance needed
- Use own (NC DEQ) previously developed collateral, press
- Scale effectively and efficiently

Not reimbursement grant– initial  
distribution (90%)

- all \$ passed to communities
- all \$ supports increasing recycling

Phase 1 - \$100,000

- Waynesville (carts)
- Alleghany Co. (new DO program)

Phase 2 - \$10,000

- Rose Hill & Princeton (carts)

Phase 3 - \$250,000

- Multi-family



# Making grants go further with co-granting

- Michigan
  - Can actually cover 100% of carts ; MI EGLE doesn't cover E&O but we do
  - Ad-hoc but close program collaboration
- New York
  - We covered truck costs due NY doesn't allow two grants to cover same line item
- Massachusetts
  - Pairing with their PAYT planning and infrastructure grants
- North Carolina
  - Ad-hoc but close program collaboration

# Rural Community Allies

---

- USDA
- Councils of Government / Regional Organizations
- Rural Community Assistance Program (RCAP)
- Colleges/Universities

# Thank you!



# QUESTIONS?



**Vincent Leray**  
*he/him*

Grant Development Manager  
[vleray@recyclingpartnership.org](mailto:vleray@recyclingpartnership.org)  
662.640.8571

